

# TUNNEL LIGHT

3.5



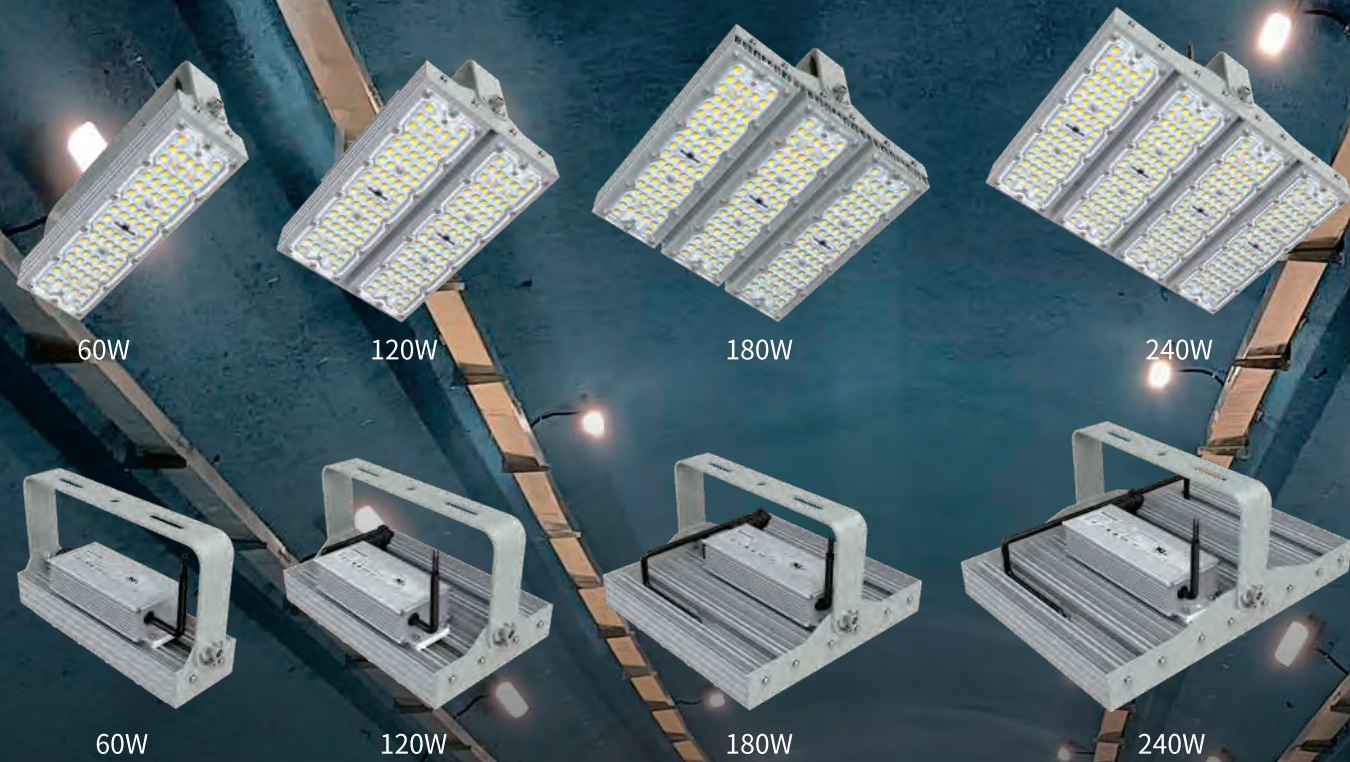
Page 119

TNC701



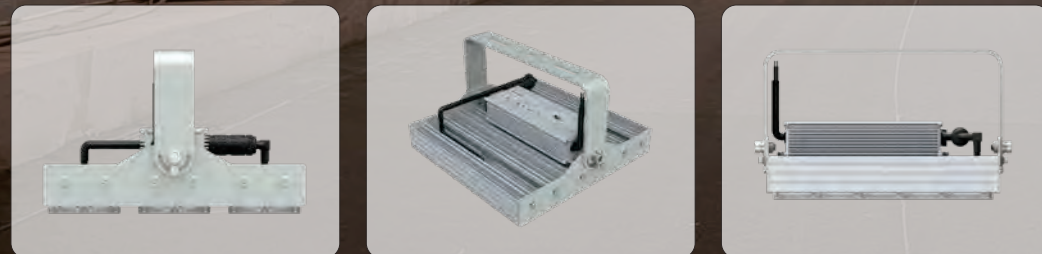
Page 121

TNC702



## TNC701 Tunnel Light

- Extremely energy efficient - up to 160 lm/W
- High Luminous flux - up to 38400 lm
- Multiple beam angle design, perfect choice for tunnel areas
- Soft light increases visual comfort and safety
- IP65 and IK10
- 3 Years warranty



### Certifications



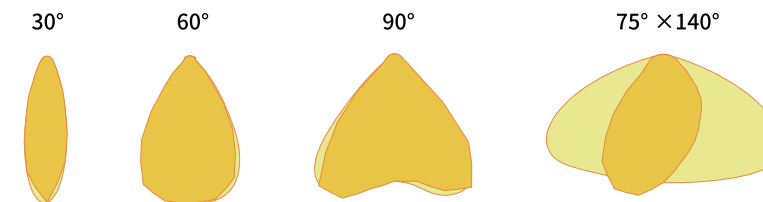
The TNC701 module design can be used as Flood light and Tunnel light. Its robust aluminum housing and highly developed driver provides excellent heat dissipation and a longer lifetime. With LM80 EMC2835 high-grade led chips, its efficiency of up to 160lm/w can help customers save energy and cost. Different beam angle options can satisfy customers demanding high visual comfort. It's an ideal solution for tunnel areas, specially designed for locations with tunnels, underpasses, underbridges, traffic tunnels, and other outdoor lighting, etc.



### Specifications:

Model No.	TNC701-60W	TNC701-120W	TNC701-180W	TNC701-240W
Dimensions(mm)	275×80×159	275×168×159	275×256×159	275×344×159
Power	30-60W	70-120W	130-180W	190-240W
Voltage	AC 100-277V 50/60Hz			
CCT(K)	3000±300K; 4000±300K; 5000±300K; 6000±500K			
Luminous Efficiency	130lm/W			
Luminous Flux 160lm/W	7800lm	15600lm	23400±1800lm	31200lm
CRI	Ra>70			
Beam Angle	30° / 60° / 90° / 75°×140°			
IP Grade Protection	IP65			

### Light distribution curve:



### Options Available:

- CRI>70
- 480V HIGH VOLTAGE DRIVER
- 20KV SURGE PROTECTION UPGRADE
- 0-10V DIMMABLE & DALI DIMMABLE

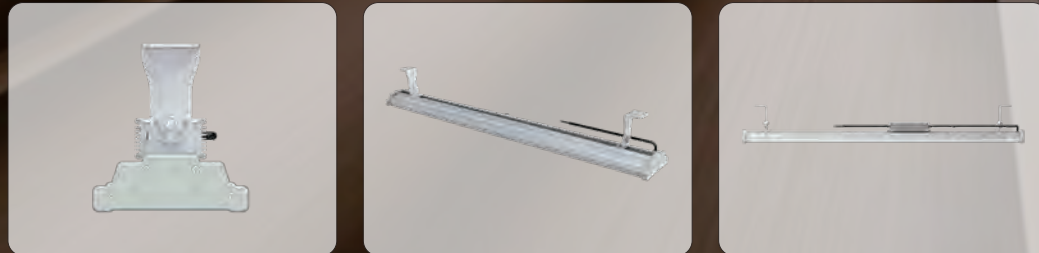
### Applications:





# TNC702 Tunnel Light

- Power range from 10W to 200W
- Luminous efficiency up to 130lm/W
- Beam angle 110°
- IP65 protection
- 3 years warranty



### Certifications



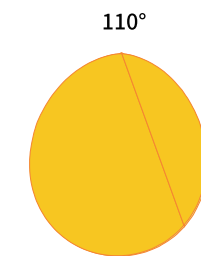
The TNC702 new tunnel light is specially designed for tunnels and can work in an environment of minus 40 degrees to 45 degrees. The installation angle can be adjusted up and down 90 degrees to flexibly meet lighting needs.



### Specifications:

Model No.	TNC702-1000/1200/1500									
Dimensions(mm)(l,w,h)	1000 / 1200 / 1500×150×160									
Power	10W	15W	20W	30W	60W	80W	100W	120W	150W	200W
Voltage	AC 100-277V 50/60Hz									
CCT(K)	3000±300K; 4000±300K; 5000±300K; 6000±500K									
Luminous Efficiency	≥ 130lm/W (4000K CRI70)									
Luminous Flux 130lm/W	1300lm	1950lm	2600lm	3900lm	7800lm	10400lm	13000lm	15600lm	19500lm	26000lm
CRI	Ra>70									
Beam Angle	110°									
IP Grade Protection	IP65									

### Light distribution curve:



### Options Available:

- CRI>70
- 480V HIGH VOLTAGE DRIVER
- 20KV SURGE PROTECTION UPGRADE
- 0-10V DIMMABLE & DALI DIMMABLE

### Applications:

