

GARAGE LIGHT

1.5





Inpark Parking Garage Light

- Unique round shape and low profile
- Impact-resistance polycarbonate optical diffuser
- Built-in sensor on/off
- High efficiency up to 130 lm/W
- IP65 grade protection

Certifications



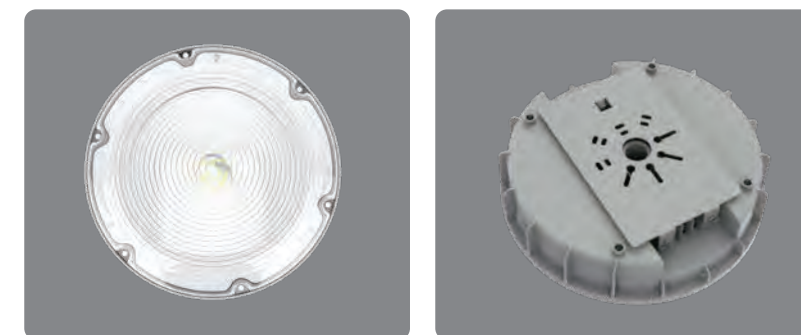
Our **Inpark Parking Garage Light** is made of die-cast aluminum heatsink with good heat dissipation performance. Its use effect is highly praised by customers and its shape is a round design which is different from most garage lights on the market. The product was originally designed for use in indoor parking, underground parking, building parking, public areas, corridors, and underground passages. With a highly reliable LED light engine and impact-resistant polycarbonate optical light diffuser, the product has a low profile design and a protection rating of IP65 for both indoor and outdoor applications. The lamp has built-in sensors that turn it on at the right time and in the right place. In addition, the low profile design gives this product an architectural appeal, which makes it an ideal choice for limited space.



Specifications:

Model No.	CP-40W	CP-60W
Dimensions(mm)	Φ285x121.5	
Power	40W	60W
Voltage	AC100-277V / 50-60Hz	
CCT	3000K; 4000K; 5000K; 6000K	
Luminous Efficiency	130 lm/W	
Luminous Flux	5200lm	7800lm
CRI	Ra >80	
Beam Angle	150°	
IP Grade Protection	IP65	

Multi-angle display:



Options Available:

- ▶ DIMMABLE 1-10V
- ▶ BUILT-IN PHOTOCELL SENSOR

Applications:

